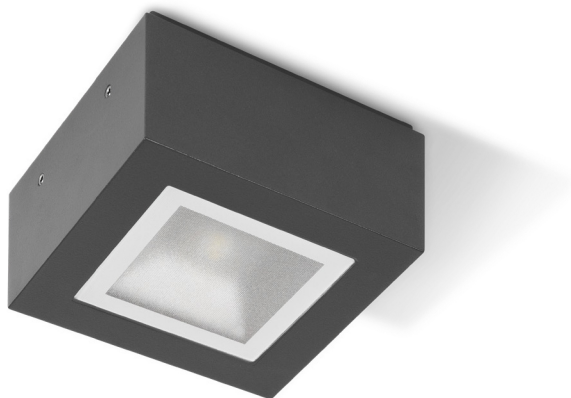


# MIMIK 10 CEILING

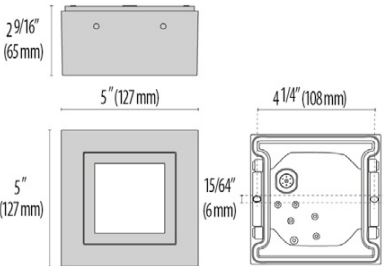


- Ceiling mount series. Fixtures consist of:
- Multi-step powder-coat painting process, optimized against UV rays and corrosion.
  - Copper-free precision die-cast aluminum housing and mounting plate.
  - Extra-clear, flat, tempered silk-screened soda-lime glass diffuser.
  - Micro-prismatic patterned, flat, tempered silk-screened soda-lime glass diffuser (TECH versions).
  - Custom molded, anti-aging gasket(s).
  - Stainless steel external hardware.
  - Custom MCPCB utilized to maximize heat dissipation and promote a long LED life.
  - High-transmittance transparent optics.
- 20° x 20° beam angle (C/I).
  - 100° x 100° beam angle (TECH).
  - Input voltage: 120-277 V (50 / 60 Hz), integral driver.
  - Consult factory for dimming options, custom finishes (please specify RAL color), and non-cataloged CCT (Kelvin) options including static colors.
  - Product meets Buy American Act requirements within ARRA.
  - 5-year warranty.
  - Marine Grade finish.
  - Suitable for Natatorium applications.
  - IDA DARK SKY Approved 3000K and below



## FINISHES

- AN-96 / Iron gray / Textured
- GR-94 / Aluminum metallic / Textured
- WH-87 / White / Textured
- BK-81 / Black / Textured
- RB-10 / Iron rust / Textured



MIMIK  
10 CEILING

Lumen Output	27K	3K	35K	4K	5K
Mimik 10 Ceiling C/I	555	600	645	690	735
Mimik 10 Ceiling Tech	648	701	753	806	856

10W Max Wattage

Scan here  
for installation  
instructions



# Order Guide - MIMIK 10 CEILING

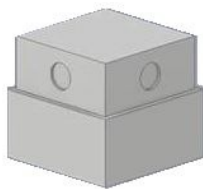


Order code example

**M10C-10W-C/I-AM-3K-120-NA**

**M10C**

Wattage	Optics	Finish	Kelvin	Voltage	Controls	Accessories
<b>10W</b> 10 watt (max)  <b>XX</b> Specify wattage must be under max	<b>C/I</b> 20° Beam  <b>34</b> 34° Beam  <b>56</b> 56° Beam  <b>TECH</b> 100°x100° Beam	<b>AM</b> Aluminum Metallic  <b>IG</b> Iron Gray  <b>IR</b> Iron Rust  <b>BK</b> Textured Black  <b>WH</b> Textured White  <b>CC</b> Custom Color	<b>27K</b> 2700k  <b>3K</b> 3000k  <b>35K</b> 3500k  <b>4K</b> 4000k  <b>5K</b> 5000K  <b>65K</b> 6500K  <b>RED</b> Static Red  <b>BLU</b> Static Blue  <b>GRN</b> Static Green  <b>RGBW</b> RGBW* Contact factory for control details	<b>UNV</b> 120-277V	<b>NA</b> Non Dimming  <b>0-10V</b> 0-10V Dimming (remote only)  <b>ELV</b> ELV Dimming (remote only)	<b>CON2</b> (double-gang j-box, adaptor plate and 1/2" knockouts)  <b>CON4</b> (double-gang j-box, adaptor plate and 3/4" knockouts)



Conduit Entry  
Jbox

Performance in Lighting reserves the right to make all necessary changes without prior notice.

Performance in Lighting - 2621 Keys Pointe - Conyers, Georgia 30013 - USA - voice 770.822.2115 - info.usa@pil.lighting  
www.performanceinlighting.com

Revision 06  
03/24